

**ICC** **INDOFINE Chemical Company, Inc.**

121 Stryker Lane, Bldg. 30, Suite 1 • Hillsborough, NJ 08844 • U.S.A.

Phone: (908) 359-6778 • FAX: (908) 359-1179

website: [www.indofinechemical.com](http://www.indofinechemical.com)

e-mail: [chemical@indofinechemical.com](mailto:chemical@indofinechemical.com)

**CERTIFICATE OF ANALYSIS**

Catalog Number: 020983

Product: **PROCYANIDIN B1**  
(Epicatechin(4β-8)catechin)

Cas Number: [20315-25-7]

Lot Number: 1702761

Chemical Formula: C<sub>30</sub>H<sub>26</sub>O<sub>12</sub>

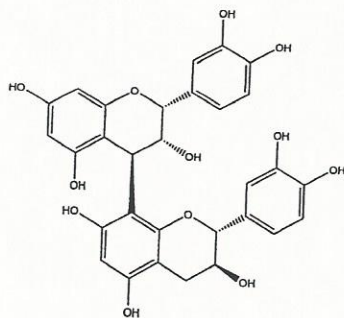
Molecular Weight: 578.53

Appearance: Pink powder

Loss on drying: 1.78%

Storage: Store at 2-8°C. To be protected from light.

Purity(HPLC): 95.58%





# INDOFINE Chemical Company, Inc.

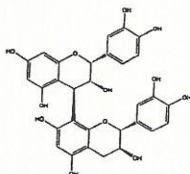
121 Stryker Lane, Bldg. 30, Suite 1 • Hillsborough, NJ 08844 • U.S.A.

Phone: (908) 359-6778 • FAX: (908) 359-1179

website: [www.indofinechemical.com](http://www.indofinechemical.com)

e-mail: [chemical@indofinechemical.com](mailto:chemical@indofinechemical.com)

## HPLC ANALYSIS



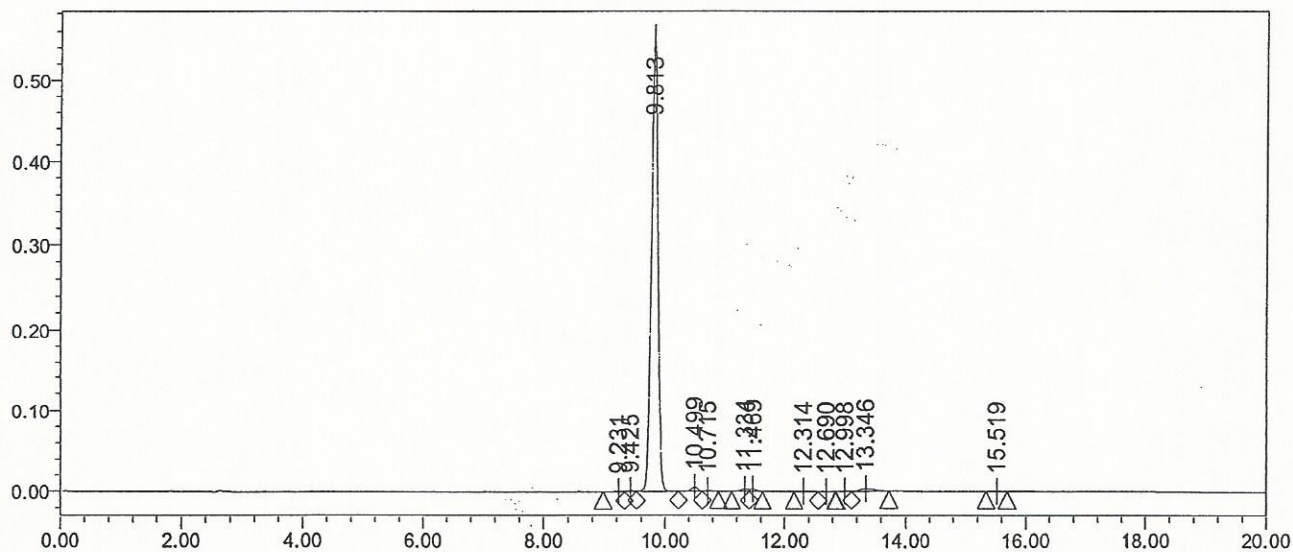
Catalog No.: 020983  
Product Name: Procyanidin B1  
Lot No.: 1702761

### SAMPLE INFORMATION

Sample Name: Procyanidin B1  
Sample Type: Unknown  
Vial: 62  
Injection #: 1  
Injection Volume: 10.00 ul  
Run Time: 20.0 Minutes

Acquired By: System  
Sample Set Name:  
Acq. Method Set: Procyanidin B1  
Processing Method: Samples  
Channel Name: 280.0nm  
Proc. Chnl. Descr.: PDA 280.0 nm

Auto-Scaled Chromatogram





# INDOFINE Chemical Company, Inc.

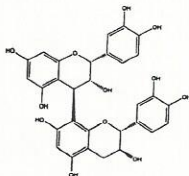
121 Stryker Lane, Bldg. 30, Suite 1 • Hillsborough, NJ 08844 • U.S.A.

Phone: (908) 359-6778 • FAX: (908) 359-1179

website: [www.indofinechemical.com](http://www.indofinechemical.com)

e-mail: [chemical@indofinechemical.com](mailto:chemical@indofinechemical.com)

## HPLC ANALYSIS



Catalog No.: 020983  
Product Name: Procyanidin B1  
Lot No.: 1702761

### Peak Results

	RT	Area	% Area	USP Plate Count	USP Resolution
1	9.231	6791	0.16		
2	9.425	14115	0.32	11587.83	
3	9.813	4173964	95.58	38710.08	
4	10.499	42451	0.97	42156.73	3.32
5	10.715	8644	0.20	24809.46	
6	11.334	28337	0.65		
7	11.469	22481	0.51		
8	12.314	4687	0.11	48887.77	
9	12.690	2889	0.07	69541.89	1.79
10	12.998	4451	0.10	61975.93	1.52
11	13.346	53450	1.22	15274.42	1.10
12	15.519	4517	0.10	75596.62	6.49